

# USER MANUAL



## Features

1. Increased safety type of explosion proof grade, 95-265V alternating current and 24V direct current for option.
2. Integrated type of tube, adopt SMD LED on aluminum base, make aluminum base completely attached to heat sink which composed of lamp body to make sure excellent heat dissipation, lead to long lifetime.
3. Adopt silicon encapsulated sealed power supply whose body made of aluminum alloy, put it inside of aluminum body and closed attached to heat sink to make sure heat dissipated from power supply.
4. Cover made of high quality PC which enjoy high-strength, impact resistant, hot resistant, corrosion-resistant.
5. Completely sealed to waterproof, dust-proof, corrosion-resistant.
6. Smart appearance, equip with two mounting brackets, it can be installed easily.

## Standard

The drawings, technical documents and the samples are verified and certified according to stands for safety as below:

EN60079-0-2010 explosive atmospheres Part 1: Equipment-General requirements

EN60079-0-2010 explosive atmospheres Part 3: Equipment protection by increased safety "e"

EN60079-18-2004 Electrical apparatus for explosive gas atmosphere 9:Encapsulation

## Features

Applied to oil fields, oil refineries, offshore oil platform, power plants, gas stations, oil tanks, wharf, tunnel, pumping station, substation, the military base,etc. Zone I and Zone II Hazardous Locations, Zone 20, Zone 21, Zone 22 and II A, IIB, IIC explosive gas atmosphere.

## Mark

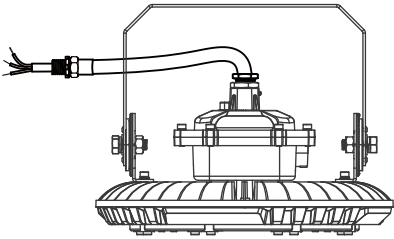


**II 2G Ex db mb IIB T4 Gb**  
**II 2D Ex tb IIIC T1 (95°C) Db**

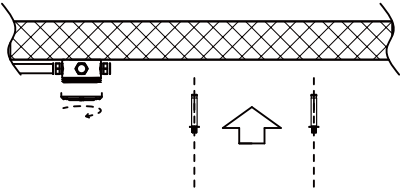
## Warning

- Unpack and check the product carefully.
- If there is any damage on new products, please keep the product packaging and timely reflect to us.
- Please do not attempt to use a damaged product.
- It should be installed by a qualified electrician.
- Non-professional personnel must not disassemble or maintain the lamp, or the manufacturer has the right to refuse any warranty service.

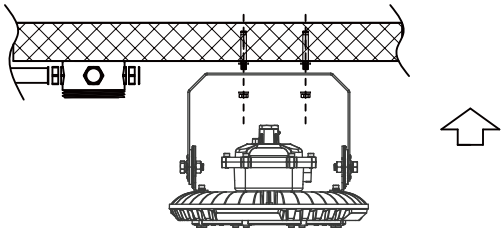
# Installation



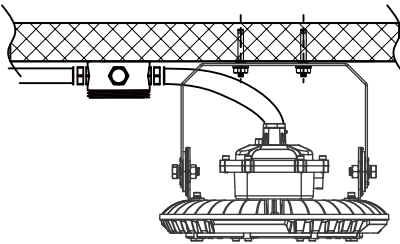
Tighten the locking screw or put the cable into the explosion-proof tube



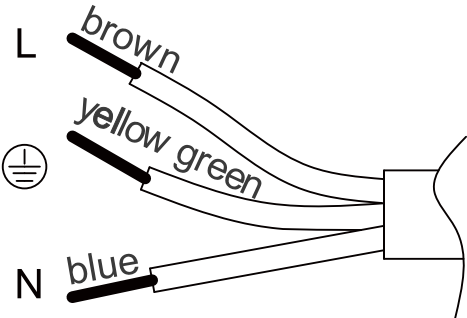
Punch the expansion screw into the wall and open the junction box.



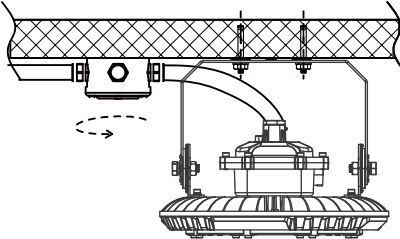
Fix the lamp with screws.



Connect the cable or explosion-proof tube to the junction box.



Connect the blue wire and brown wire to the "N" and "L" respectively and Yellow-green wire to the ground wire.



Close the junction box.