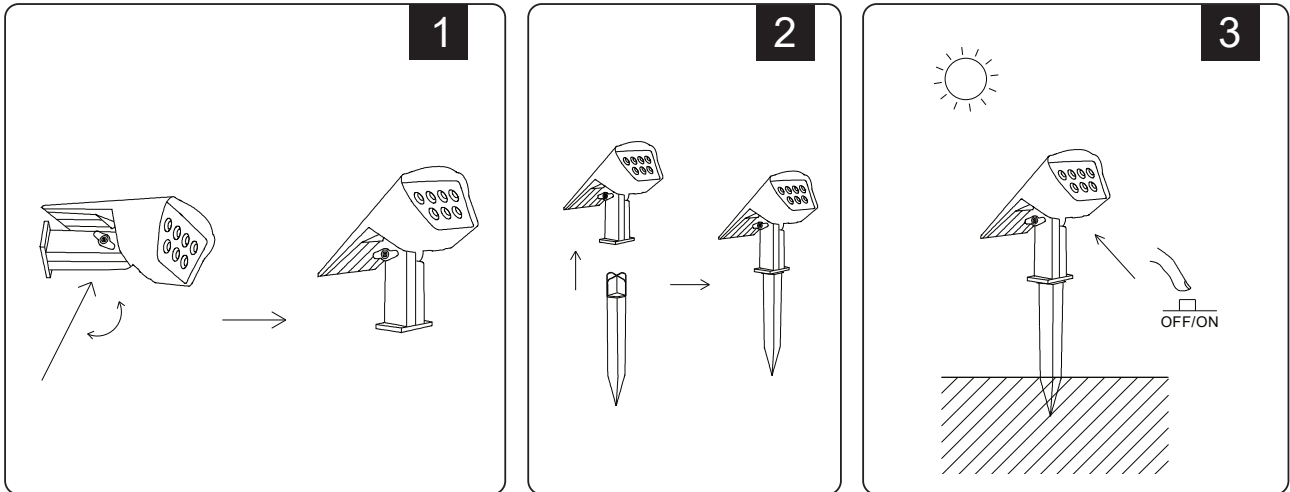

INSTRUCTION MANUAL

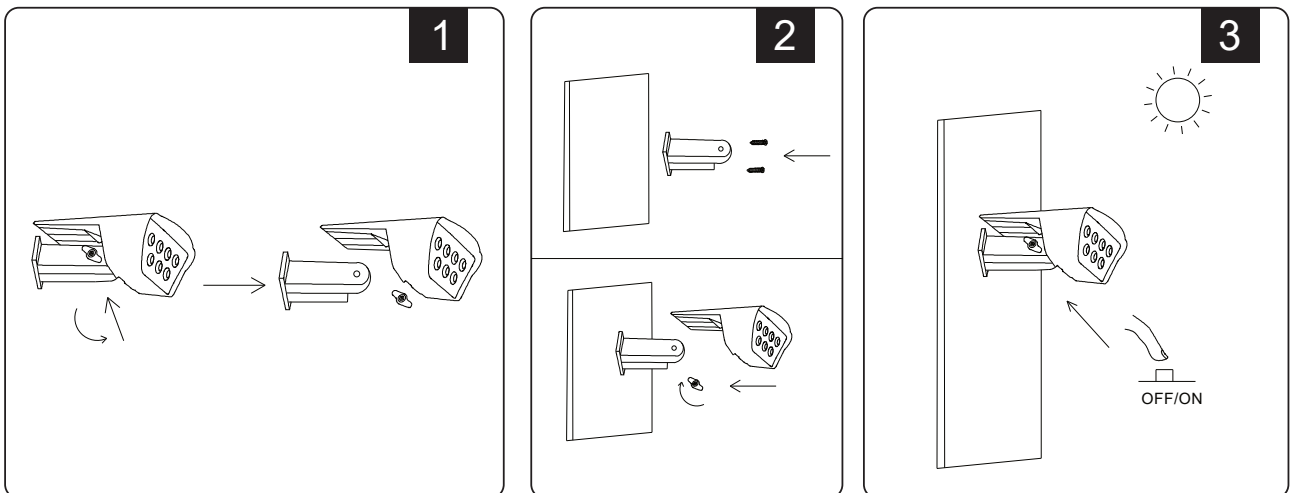
SOLAR LED GARDEN LIGHT

INSTALLATION INSTRUCTIONS

Spike Installation



Wall Installation



TYPE 1: SPIKE INSTALLATION

- Adjust the angle of the lamp body to achieve the desired direction.
- Secure the ground spike bracket firmly in place.
- Position the device in a suitable lawn area, ensuring stability and proper placement.
- Verify the installation for accuracy, then press the switch button to activate the lamp.

TYPE 2: WALL INSTALLATION

- Disassemble the pole and securely install it onto the wall using screws.
 - Reattach the lamp body and fasten it with nuts, adjusting the angle as needed.
 - Verify the installation for accuracy, then press the switch button to activate the lamp.
-

INSTRUCTIONS FOR USE

1. Press the switch once – Activates Warm Light Mode
2. Press the switch twice – Activates White Light Mode
3. Press the switch three times – Activates Neutral Light Mode
4. Press the switch four times – Turns the light off

AUTOMATIC LIGHTING FEATURE

Ensure the switch is set to the ON position. The light will automatically illuminate at night and turn off at dawn

SOLAR PANEL MAINTENANCE & WARNING

- Do not use solvents, petrol, etc. Otherwise the light will be damaged.
- Clean the light with a dry, lint-free cloth.
- Check the solar panel for dirt regularly. If dirt or is present remove it to guarantee flawless function of the product.
- Especially during the winter, keep the product free from snow and ice.
- Keep away from the fire.
- Don't immerse in the water.

IMPORTANT NOTES

- This product contains battery type "Secondary" (rechargeable).
- Electrical and electronic equipment that has become waste is known as old equipment/device. Old devices must not be disposed of with other household waste.
- Owners of old devices at the end of its service life must return the device by taking them to the collection points set up by public waste disposal authorities or distributors. This return does not entail any costs for you.
- Owners of old devices have an obligation to remove accessible batteries / rechargeable batteries as well as non-destructively removable lamps from the old device prior to return. This does not apply if old devices are being prepared for reuse with the participation of a public law firm.
- Battery removal warning: The battery contained in this product must be removed only by professional personnel only. The battery must never be removed by the end user, if not removed correctly it could damage the battery which could cause fire.
- Batteries removed from an old electronic device should be disposed of separately. This return of battery does not entail any costs for you and the user is obliged to return the battery.
- Please make sure that this product is not powered on when removing the battery. Fire hazard! Avoid short-circuiting the contacts of a detached battery. Do not incinerate the battery. Please handle the battery with Caution!
- If electrical appliances or batteries are disposed of in landfills or dumps, hazardous substances can leak into the groundwater and get into the food chain, damaging your health and well-being.



- The symbol of "Crossed rubbish bins" indicates that this product should not be disposed of with other household wastes and must be collected separately from unsorted municipal waste at the end of its service life.
- Please use the link below to view the online directory of the collection and return points: <https://www.ear-system.de/ear-verzeichnis/sammel-und-ruecknahmestellen>

